



TEST REPORT

Applicant: Ajax Systems Inc
Address: 910 Foulk Rd., Wilmington, DE 19803, United States

The following sample(s) was/were submitted and identified on behalf of the client as:

Product name: Ajax LeaksProtect
Model: Ajax LeaksProtect
Trade mark:



Manufacturer: "Research and Production Enterprise "Ajax" LLC
Address: 04073, Ukraine, Kyiv, Sklyarenko, 5

Sample Received Date: Nov. 28, 2016
Testing Period Nov. 28, 2016~ Dec. 05, 2016

Test Requirement:

1. As specified by client, to screen Lead(Pb), Cadmium(Cd), Mercury(Hg), Chromium(Cr) and Bromine(Br) in the submitted sample(s) by XRF. When screening results exceed the XRF screening limit in IEC62321-3-1: 2013, further use of chemical methods are required to test the Lead(Pb), Cadmium(Cd), Mercury(Hg), Hexavalent Chromium(Cr(VI)), Polybrominated Biphenyls(PBBs) and Polybrominated Diphenyl Ethers(PBDEs) in the submitted samples in accordance with ROHS directive 2011/65/EU.
2. As specified by client, to test Lead(Pb), Cadmium(Cd), Mercury(Hg) in the submitted sample(s) according to the requirement with battery directive 2006/66/EC and amendment 2013/56/EU.

Conclusion:

Pass

Refer to
The Battery

Test Result(s): Please refer to the following page(s);

Test Method: Please refer to the following page(s);

Tested by _____

Reviewed by: _____

Approved by: _____

Date: _____



Shenzhen NTEK Testing Technology Co., Ltd.

Address: 1/F, Building E, Fenda Science Park, Sanwei Community, Xixiang Street, Bao' an District, Shenzhen 518126 P.R.China
Tel: +86-755-6115 6588 Fax: +86-755-6115 6599 <http://www.ntek.org.cn>

Test Result(s):

1. Shell

Sample No.	Sample Description	Tested Items	XRF Screening Test	Chemical Test (mg/kg)	Conclusion
1	Black plastic shell	Pb	BL	/	PASS
		Cd	BL	/	
		Hg	BL	/	
		Cr(Cr(VI))	BL	/	
		Br(PBBs&PBDEs)	BL	/	
2	White label paper of black plastic shell	Pb	BL	/	PASS
		Cd	BL	/	
		Hg	BL	/	
		Cr(Cr(VI))	BL	/	
		Br(PBBs&PBDEs)	BL	/	
3	White rubber ring of black plastic shell	Pb	BL	/	PASS
		Cd	BL	/	
		Hg	BL	/	
		Cr(Cr(VI))	BL	/	
		Br(PBBs&PBDEs)	BL	/	
4	Transparent plastic plate of black plastic shell	Pb	BL	/	PASS
		Cd	BL	/	
		Hg	BL	/	
		Cr(Cr(VI))	BL	/	
		Br(PBBs&PBDEs)	BL	/	
5	White paster of black plastic shell	Pb	BL	/	PASS
		Cd	BL	/	
		Hg	BL	/	
		Cr(Cr(VI))	BL	/	
		Br(PBBs&PBDEs)	BL	/	
6	Silvery metal spring of black plastic shell	Pb	BL	/	PASS
		Cd	BL	/	
		Hg	BL	/	
		Cr(Cr(VI))	BL	/	
		Br(PBBs&PBDEs)	/	/	
7	Black metal screw of black plastic shell	Pb	BL	/	PASS
		Cd	BL	/	
		Hg	BL	/	
		Cr(Cr(VI))	IN	Negative	
		Br(PBBs&PBDEs)	/	/	

2. PCB

Sample No.	Sample Description	Tested Items	XRF Screening Test	Chemical Test (mg/kg)	Conclusion
8	PCB	Pb	BL	/	PASS
		Cd	BL	/	
		Hg	BL	/	
		Cr(Cr(VI))	BL	/	
		Br(PBBs&PBDEs)	BL	/	
9	Red metal wire	Pb	BL	/	PASS
		Cd	BL	/	
		Hg	BL	/	
		Cr(Cr(VI))	BL	/	
		Br(PBBs&PBDEs)	/	/	
10	Silvery metal shell of black contact switch	Pb	BL	/	PASS
		Cd	BL	/	
		Hg	BL	/	
		Cr(Cr(VI))	IN	Negative	
		Br(PBBs&PBDEs)	/	/	
11	Silvery metal shrapnel of black contact switch	Pb	BL	/	PASS
		Cd	BL	/	
		Hg	BL	/	
		Cr(Cr(VI))	BL	/	
		Br(PBBs&PBDEs)	/	/	
12	Metal pin of black contact switch	Pb	BL	/	PASS
		Cd	BL	/	
		Hg	BL	/	
		Cr(Cr(VI))	BL	/	
		Br(PBBs&PBDEs)	/	/	
13	Black plastic of black contact switch	Pb	BL	/	PASS
		Cd	BL	/	
		Hg	BL	/	
		Cr(Cr(VI))	BL	/	
		Br(PBBs&PBDEs)	BL	/	
14	Black plastic button of black contact switch	Pb	BL	/	PASS
		Cd	BL	/	
		Hg	BL	/	
		Cr(Cr(VI))	BL	/	
		Br(PBBs&PBDEs)	BL	/	



15	White plastic of white electronic component	Pb	BL	/	PASS
		Cd	BL	/	
		Hg	BL	/	
		Cr(Cr(VI))	BL	/	
		Br(PBBs&PBDEs)	BL	/	
16	Steel ball of white electronic component	Pb	BL	/	PASS
		Cd	BL	/	
		Hg	BL	/	
		Cr(Cr(VI))	BL	/	
		Br(PBBs&PBDEs)	/	/	
17	Golden metal contact sheet of white electronic component	Pb	BL	/	PASS
		Cd	BL	/	
		Hg	BL	/	
		Cr(Cr(VI))	BL	/	
		Br(PBBs&PBDEs)	/	/	
18	Silvery metal shell of silvery contact switch	Pb	BL	/	PASS
		Cd	BL	/	
		Hg	BL	/	
		Cr(Cr(VI))	BL	/	
		Br(PBBs&PBDEs)	/	/	
19	Golden metal button of silvery contact switch	Pb	BL	/	PASS
		Cd	BL	/	
		Hg	BL	/	
		Cr(Cr(VI))	BL	/	
		Br(PBBs&PBDEs)	/	/	
20	Silvery metal shrapnel of silvery contact switch	Pb	BL	/	PASS
		Cd	BL	/	
		Hg	BL	/	
		Cr(Cr(VI))	BL	/	
		Br(PBBs&PBDEs)	/	/	
21	Metal pin of silvery contact switch	Pb	BL	/	PASS
		Cd	BL	/	
		Hg	BL	/	
		Cr(Cr(VI))	BL	/	
		Br(PBBs&PBDEs)	/	/	
22	Black plastic of silvery contact switch	Pb	BL	/	PASS
		Cd	BL	/	
		Hg	BL	/	
		Cr(Cr(VI))	BL	/	
		Br(PBBs&PBDEs)	BL	/	



23	Chip	Pb	BL	/	PASS
		Cd	BL	/	
		Hg	BL	/	
		Cr(Cr(VI))	BL	/	
		Br(PBBs&PBDEs)	BL	/	
24	SMD resistor	Pb	BL	/	PASS
		Cd	BL	/	
		Hg	BL	/	
		Cr(Cr(VI))	BL	/	
		Br(PBBs&PBDEs)	BL	/	
25	SMD capacitor	Pb	BL	/	PASS
		Cd	BL	/	
		Hg	BL	/	
		Cr(Cr(VI))	BL	/	
		Br(PBBs&PBDEs)	BL	/	
26	SMD diode	Pb	BL	/	PASS
		Cd	BL	/	
		Hg	BL	/	
		Cr(Cr(VI))	BL	/	
		Br(PBBs&PBDEs)	BL	/	
27	SMD audion	Pb	BL	/	PASS
		Cd	BL	/	
		Hg	BL	/	
		Cr(Cr(VI))	BL	/	
		Br(PBBs&PBDEs)	BL	/	
28	LED light bead of SMD	Pb	BL	/	PASS
		Cd	BL	/	
		Hg	BL	/	
		Cr(Cr(VI))	BL	/	
		Br(PBBs&PBDEs)	BL	/	
29	SMD PCB	Pb	BL	/	PASS
		Cd	BL	/	
		Hg	BL	/	
		Cr(Cr(VI))	BL	/	
		Br(PBBs&PBDEs)	BL	/	
30	SMD capacitor of SMD PCB	Pb	BL	/	PASS
		Cd	BL	/	
		Hg	BL	/	
		Cr(Cr(VI))	BL	/	
		Br(PBBs&PBDEs)	BL	/	



31	SMD inductor of SMD PCB	Pb	BL	/	PASS
		Cd	BL	/	
		Hg	BL	/	
		Cr(Cr(VI))	BL	/	
		Br(PBBs&PBDEs)	/	/	
32	Chip 1 of SMD PCB	Pb	BL	/	PASS
		Cd	BL	/	
		Hg	BL	/	
		Cr(Cr(VI))	BL	/	
		Br(PBBs&PBDEs)	BL	/	
33	Crystal oscillator of SMD PCB	Pb	BL	/	PASS
		Cd	BL	/	
		Hg	BL	/	
		Cr(Cr(VI))	BL	/	
		Br(PBBs&PBDEs)	/	/	
34	White label paper	Pb	BL	/	PASS
		Cd	BL	/	
		Hg	BL	/	
		Cr(Cr(VI))	BL	/	
		Br(PBBs&PBDEs)	BL	/	
35	FPC	Pb	BL	/	PASS
		Cd	BL	/	
		Hg	BL	/	
		Cr(Cr(VI))	BL	/	
		Br(PBBs&PBDEs)	BL	/	
36	PCB of FPC	Pb	BL	/	PASS
		Cd	BL	/	
		Hg	BL	/	
		Cr(Cr(VI))	BL	/	
		Br(PBBs&PBDEs)	BL	/	
37	White colloid of FPC	Pb	BL	/	PASS
		Cd	BL	/	
		Hg	BL	/	
		Cr(Cr(VI))	BL	/	
		Br(PBBs&PBDEs)	BL	/	
38	Silvery metal contact sheet of FPC	Pb	BL	/	PASS
		Cd	BL	/	
		Hg	BL	/	
		Cr(Cr(VI))	BL	/	
		Br(PBBs&PBDEs)	/	/	



3. Battery

Sample No.	Sample Description	Tested Items	XRF Screening Test	Chemical Test (mg/kg)	Conclusion
39	Silvery plastic jacket	Pb	BL	/	PASS
		Cd	BL	/	
		Hg	BL	/	
		Cr(Cr(VI))	BL	/	
		Br(PBBs&PBDEs)	BL	/	

- Note:
- N.D. = Not Detected (<MDL)
 - MDL = Method Detection Limit
 - mg/kg = ppm = parts per million
 - /=Not Regulated or Not Applicable
 - BL = Under the XRF screening limit
 - IN = Further chemical test will be conducted when the screening result inconclusive
 - OL = Further chemical test will be conducted while the result is above the screening limit.
 - Negative = Absence of Cr(VI) , the detected Cr(VI) concentration in the boiling water extraction solution is less than 0.10 $\mu\text{g}/\text{cm}^2$ with 50 cm^2 sample surface area used.
 - Positive = Presence of Cr(VI), the detected Cr(VI) concentration in the boiling water extraction solution is equal to or greater than 0.13 $\mu\text{g}/\text{cm}^2$ with 50 cm^2 sample surface area used.

- Remark:
- 1.The screening results are only used for reference.
 - 2.When conducting the test for PBBs&PBDEs, XRF was introduced to screen Br Exclusively; When conducting the test for Hexavalent Chromium, XRF was introduced to screen Chromium exclusively.

**The Battery (Test result)**

Test Items	Sample concentration (mg/kg)	MDL (mg/kg)	Standard requirement,mg/kg
	1		
Lead(Pb)	190	2	< 40*
Cadmium(Cd)	N.D.	2	<20
Mercury(Hg)	N.D.	2	<5
Result (P/F)	P		

Sample Description:

1: Battery

- Note:
- N.D. = (Not Detected) (<MDL)
 - MDL = (Method Detection Limit)
 - mg/kg = ppm = 0.0001%
 - /= Not Regulated or Not Applicable
 - P=Pass
 - F=Fail

Remark: According to EU Directive 2006/66/EC and amendment 2013/56/EU

1. Without prejudice to directive 2000/53/EC, Member States shall prohibit the placing on the market of:
 - (a) all batteries or accumulators, whether or not incorporated into appliances, that contain more than 0.0005% of mercury by weight.
 - (b) portable batteries or accumulators, including those incorporated into appliances, that contain more than 0.002% of cadmium by weight.
2. The prohibition set out in paragraph 1(b) shall not apply to portable batteries and accumulators intended for use in:
 - (a) emergency and alarm systems, including emergency lighting; or
 - (b) medical equipment; or
 - (c) cordless power tools (expiration date Dec. 31, 2016)
3. Batteries, accumulators and button cells containing more than 0.004% of lead, shall be marked with the chemical symbol for the metal concerned: Pb.

Test Method:

1. Screening test by XRF spectroscopy

XRF screening limits in mg/kg for regulated elements according to IEC 62321-3-1:2013

Element	Limit of IEC 62321-3-1:2013 (unit:mg/kg)		MDL	
	Polymers and metals	Composite material	Polymers	Other material
Pb	$BL \leq (700-3\sigma) < X$ $< (1300+3\sigma) \leq OL$	$BL \leq (500-3\sigma) < X$ $< (1500+3\sigma) \leq OL$	10 mg/kg	50 mg/kg
Cd	$BL \leq (70-3\sigma) < X$ $< (130+3\sigma) \leq OL$	$LOD < X < (150+3\sigma) \leq OL$	10 mg/kg	50 mg/kg
Hg	$BL \leq (700-3\sigma) < X$ $< (1300+3\sigma) \leq OL$	$BL \leq (500-3\sigma) < X$ $< (1500+3\sigma) \leq OL$	10 mg/kg	50 mg/kg
Cr	$BL \leq (700-3\sigma) < X$	$BL \leq (500-3\sigma) < X$	10 mg/kg	50 mg/kg
Br	$BL \leq (300-3\sigma) < X$	$BL \leq (250-3\sigma) < X$	10 mg/kg	50 mg/kg

Note: -BL = Under the XRF screening limit

-OL = Further chemical test will be conducted while result is above the screening limit.

-X= The symbol "X" marks the region where further investigation is necessary.

 -3 σ = The reproducibility of analytical instruments

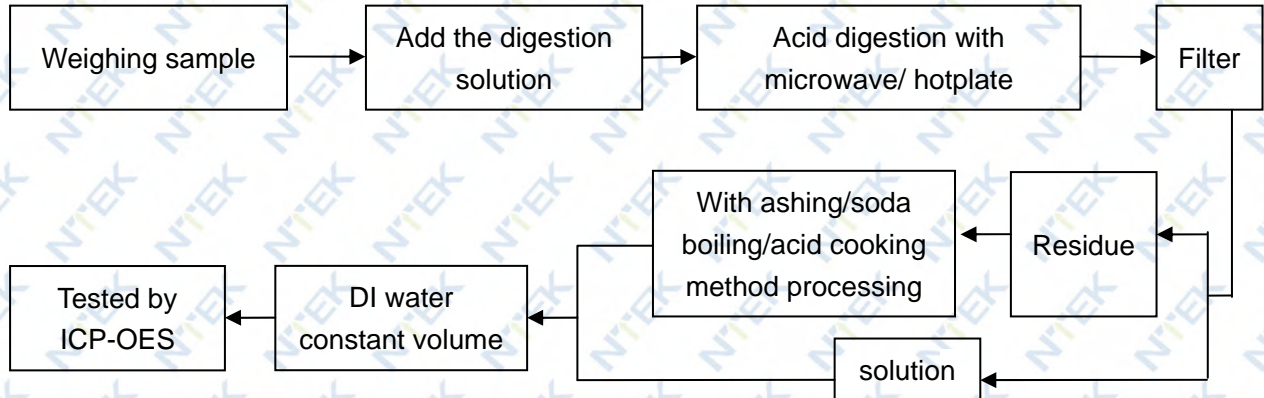
-LOD= Detection limit

2. Chemical Test

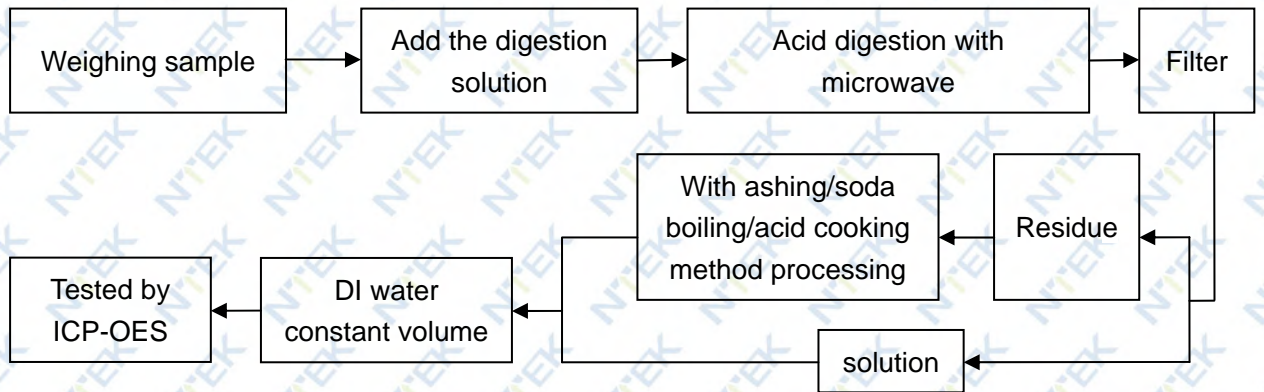
Test item	Pretreatment method	Test instrument	MDL
Lead(Pb)	IEC 62321-5:2013 Ed.1.0	ICP-OES	2 mg/kg
Cadmium(Cd)	IEC 62321-5:2013 Ed.1.0	ICP-OES	2 mg/kg
Mercury(Hg)	IEC 62321-4:2013 Ed.1.0	ICP-OES	2 mg/kg
Chromium VI(Cr VI)	IEC 62321:2008 Ed.1.0 & IEC 62321-7-1:2015 Ed.1.0	UV-Vis	2 mg/kg
PBBs/ PBDEs	IEC 62321-6:2015 Ed.1.0	GC-MS	5 mg/kg

Test Flow:

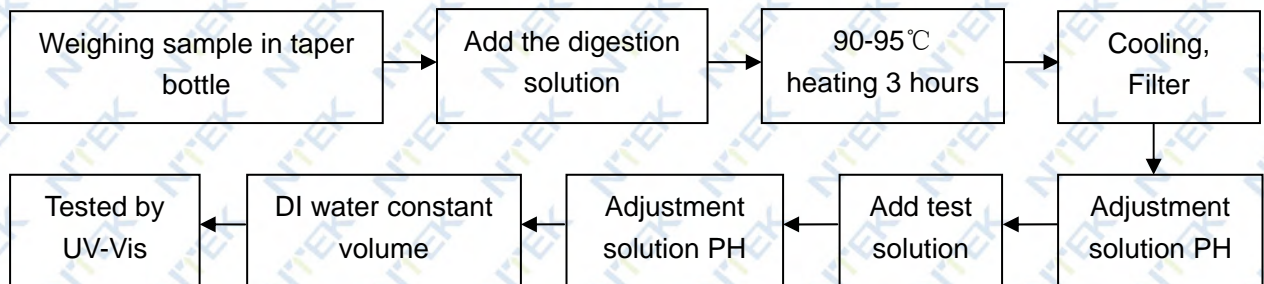
1. Lead(Pb), Cadmium(Cd)



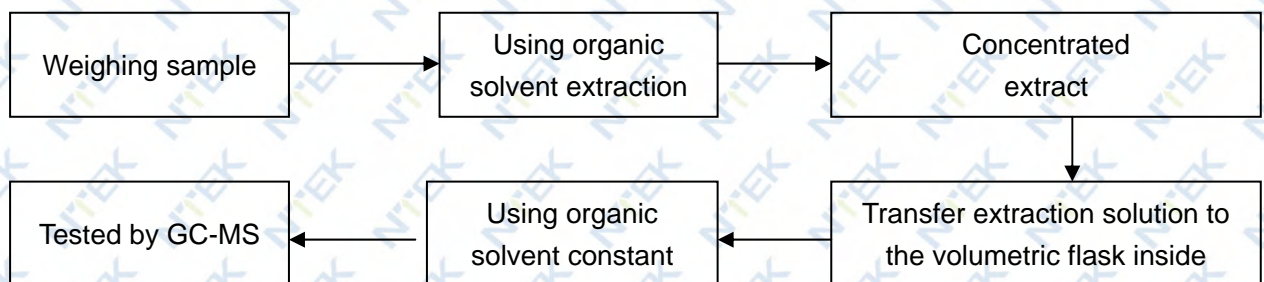
2. Mercury (Hg)



3. Chromium VI(Cr VI)



4. PBBs/ PBDEs



Sample photo(s):



Fig.1



Fig.2

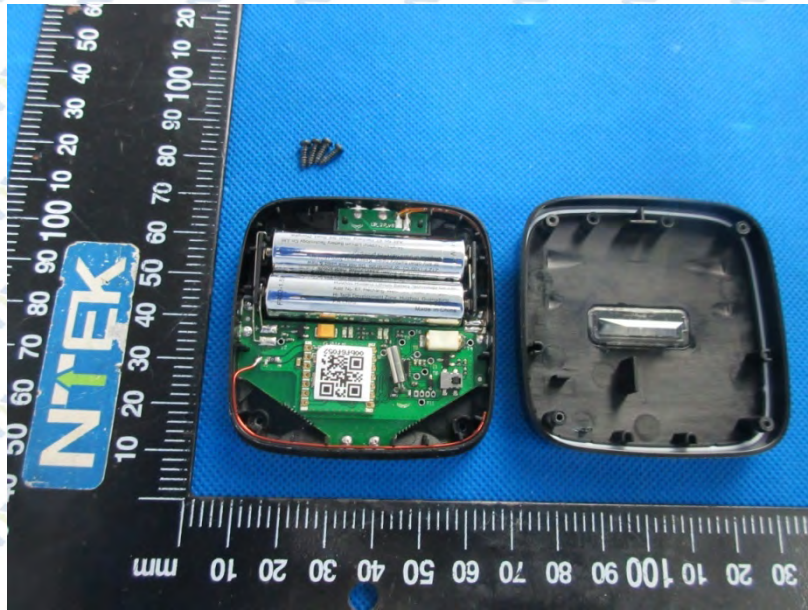


Fig.3

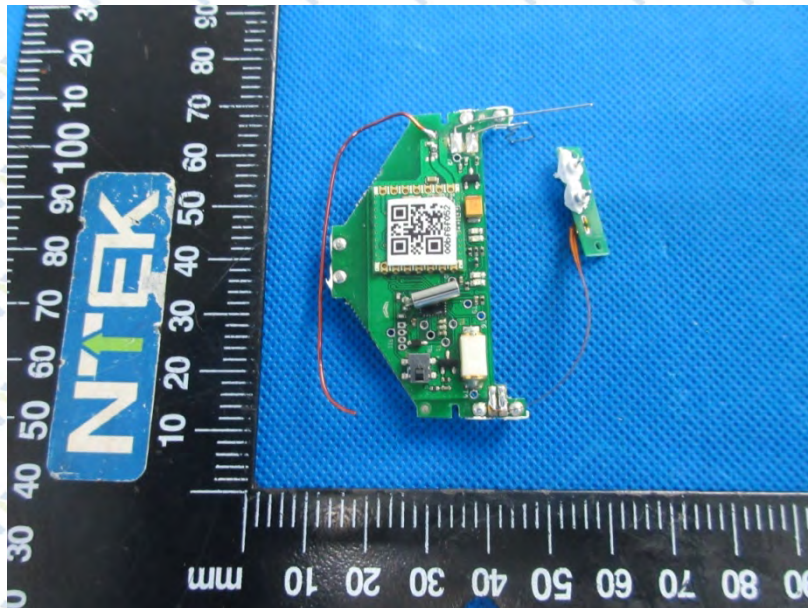


Fig.4

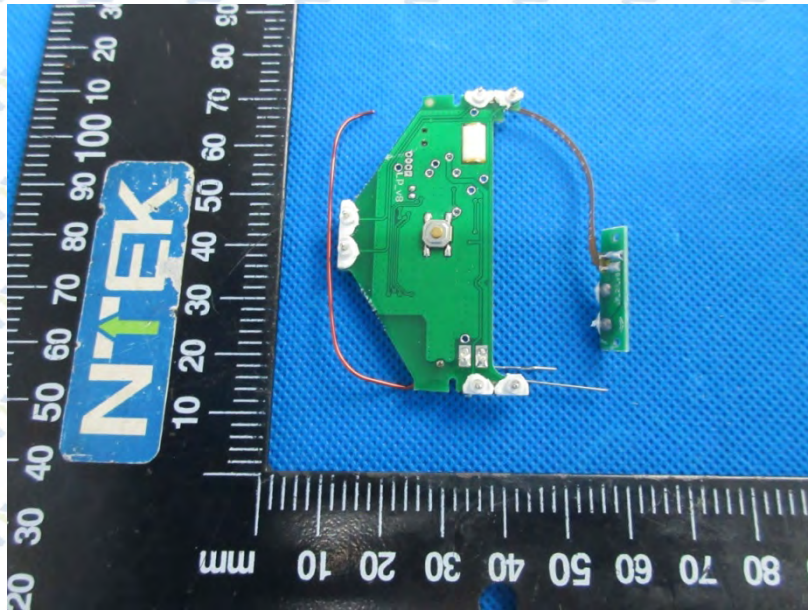


Fig.5

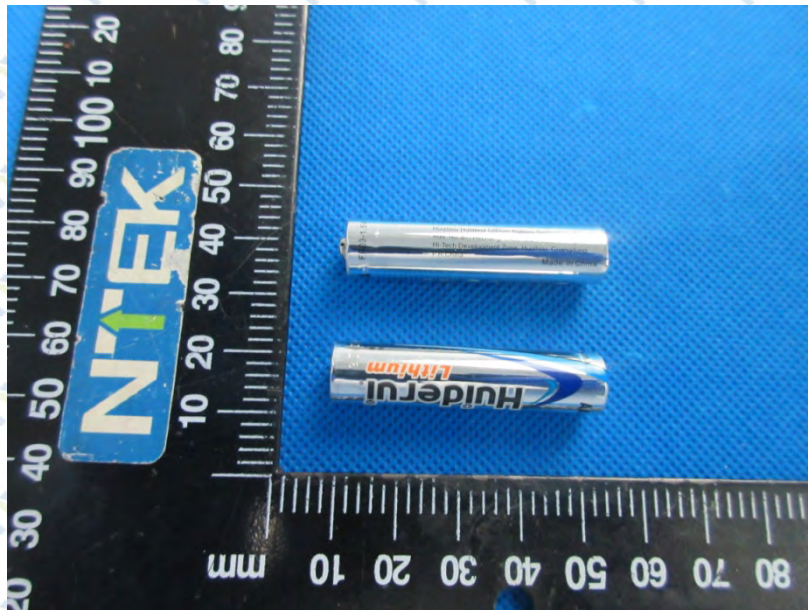


Fig.6

****End of Report****

The test report is effective only with both signature and specialized stamp, The result(s) shown in this report refer only to the sample(s) tested. Without written approval of NTEK, this report can't be reproduced except in full.