



EUROPEAN TECHNICAL CENTER

FIRMWARE RELEASE NOTE

2-Wire IP Video Intercom Firmware Release Notes

Supported Models DS-KH8340-TCE2	Firmware Version	DZ20171020_052_21_E3_EN_STD_V1.4.45_180702.zip
Supported Models DS-KV8103-IME2	Firmware Version	DZ20171020_052_21_A1_EN_STD_V2.0.0_180702.zip
iVMS4200 Version		V2.7.1.9 build 20180604

Note:

- ❖ After upgrading to new firmware, manually restore default setting for fully upgrade.

Reason of Upgrade

Added or modified functions, enhance products quality and meet customers' requirements

New Features

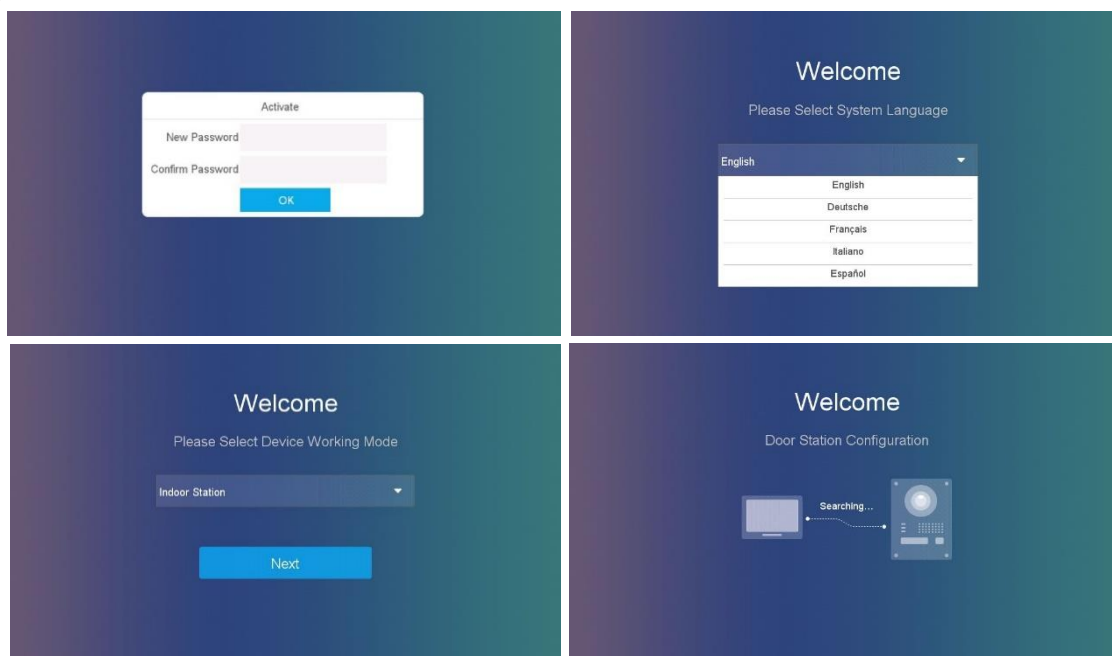
1. Support 5 languages for GUI and voice prompts: English, Italian, German, French and Spanish.

2. Support one indoor station and up to five indoor extensions.

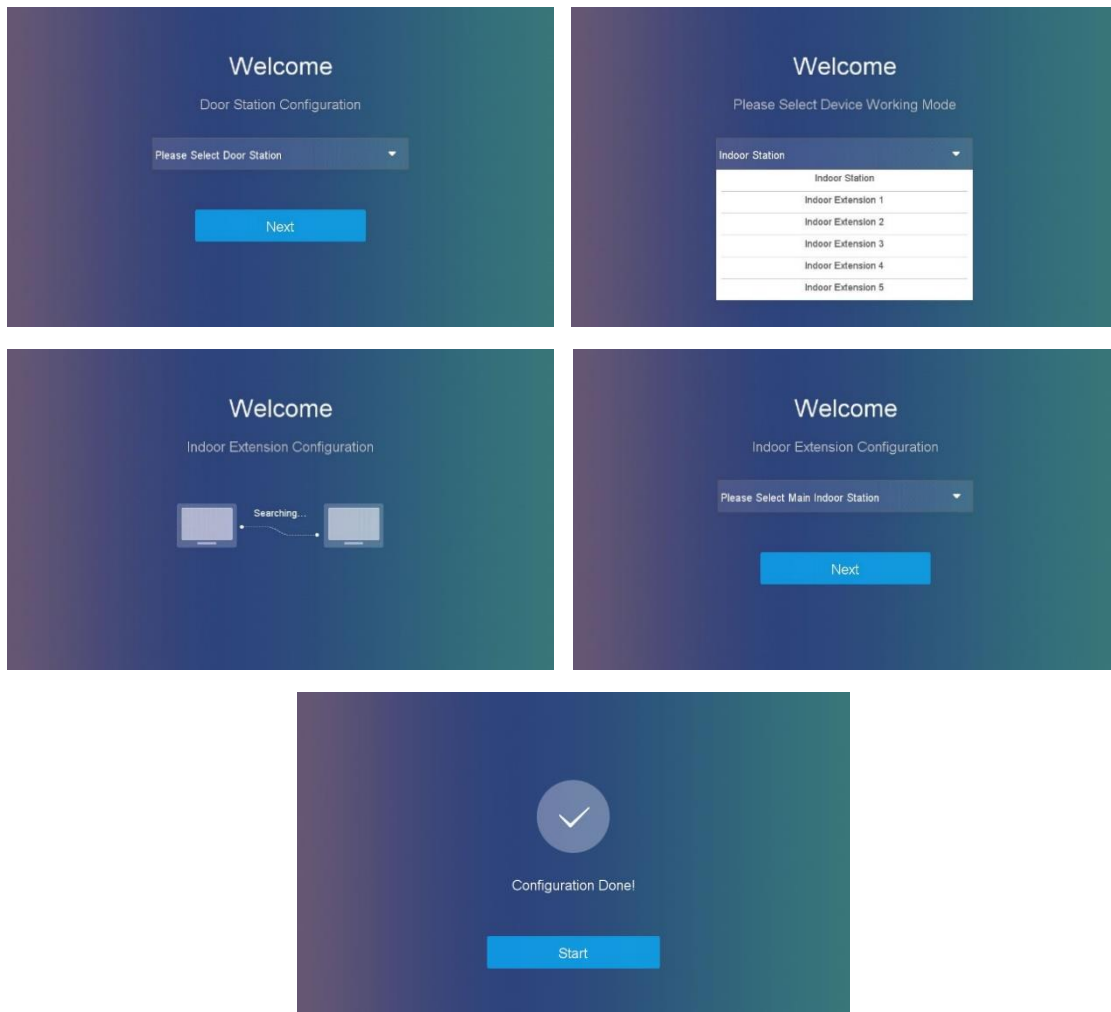
Indoor extensions (room No. range of indoor extensions: 1~5) can call each other by dialing Room No.

3. Support Plug & play quick setup wizard

If the device is powered out of the box or reset to factory defaults a simple configuration wizard will be displayed on the indoor station. Following the few steps will help user setup the system in no time without using any PC.



Connect door station to main indoor station



Connect indoor extension to main indoor station

4. Main indoor station support SADP search tool.

With SADP you can search out all the door/indoor stations in the same LAN, activate and add door station to indoor station, synchronize the language of door station with indoor station, adjust the volume of door station and restore it to the factory defaults.

5. Capture photos manually or on call button pressed.

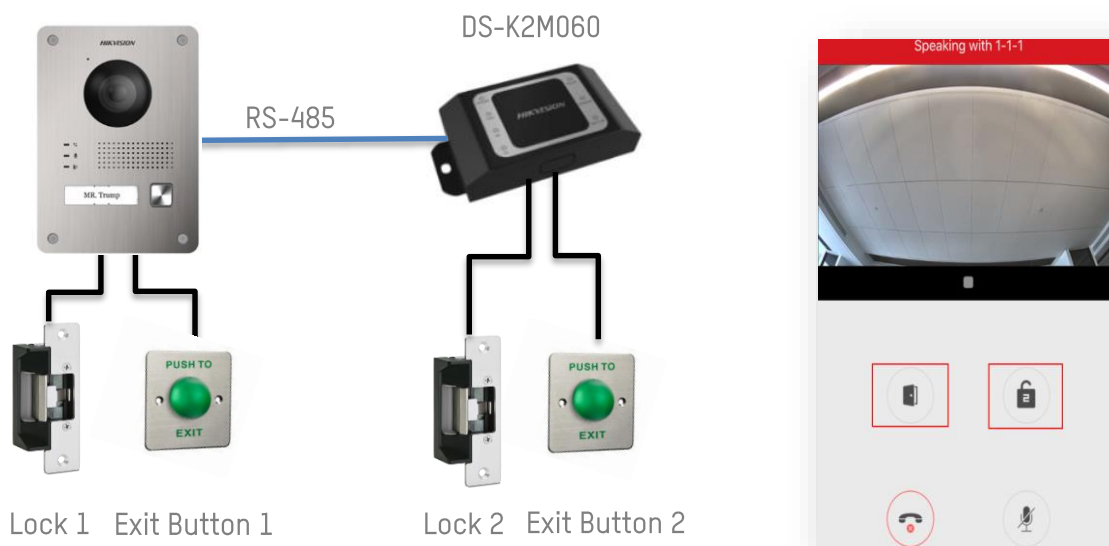
When a visitor press the call button a photo will be captured and stored in Information->Picture menu (SD card required, hot swap is not supported)). Photos can also be captured manually in a call.

6. Support leaving voice message,

After configured calling duration the call is not answered door station will ask the visitor to leave a voice message with max. length 30 seconds (SD card required)

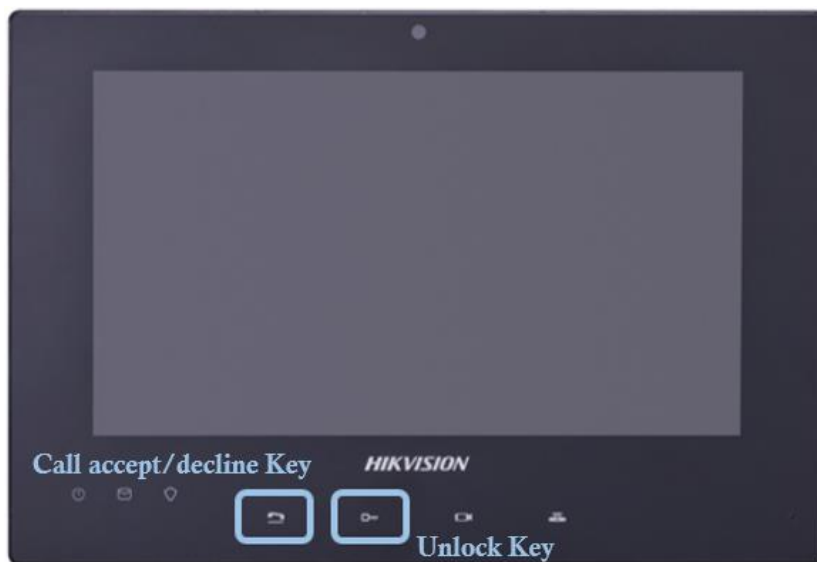
7. Support second door relay expansion via DS-K2M060 secure door control module.

Connect the secure door control module to door station via RS-485 to control a second relay for garage door, lights etc. via the indoor station, Hik-Connect or iVMS-4200.



Note: The secure module is plug and play. Call, accept/decline keys on the indoor station can only open the lock connect to door station.

8. Support pressing indoor station Call accept/decline key to answer/hang up directly and unlock key to open door directly



9. Added factory reset function on the local interface of the indoor station

10. Support cropping/zooming fisheye image in live view.

In case the door stations in a proximity to a wall on some of it sides the image can be zoomed and cropped to the region of interest.

Modified Features

1. DHCP function of Indoor station and Door station is enabled by default.
2. Alarm module, call elevator module, call center module and notice function are deleted.
3. Add caps lock key to the device touch keyboard.
4. NTP is enabled by default. The default time zone is GMT+1, and the default NTP server is pool.ntp.org.
5. If the call button is pressed several times in period of 4 seconds the call will not be canceled.
6. Added missed call menu and captured photos menu when in indoor extension mode.

Customer Impact and Recommended Action

This new firmware upgrade is to improve product performance, and will take effect automatically after upgrading from previous versions. We'd like to inform you for the above changes. Also, we are sorry for any possible inconvenience of use-habit changes caused by this action.

For questions or concerns, please contact our local technical support team.



Note:

Hikvision has all rights to alter, modify and cancel this notice.

Hikvision doesn't give any guarantee for old models' stock.

Hikvision is not liable for any typing or printing errors.

For special model's change details, please contact our local technical support team.

Hikvision Digital Technology CO., Ltd.
No. 555 Qianmo Road, Binjiang District, Hangzhou
310052, China
Tel: +86-571-8807-5998
FAX: +86-571-8993-5635