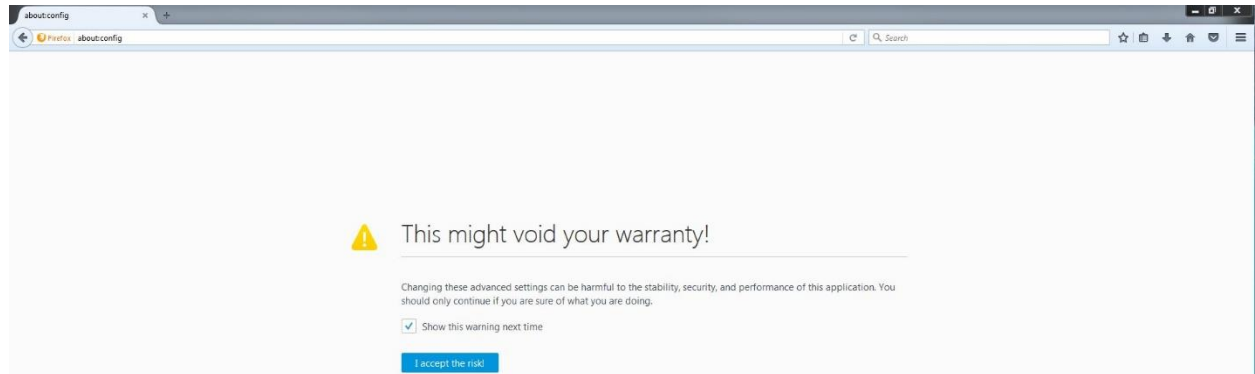


How to use Firefox v52 to live view Hikvision device

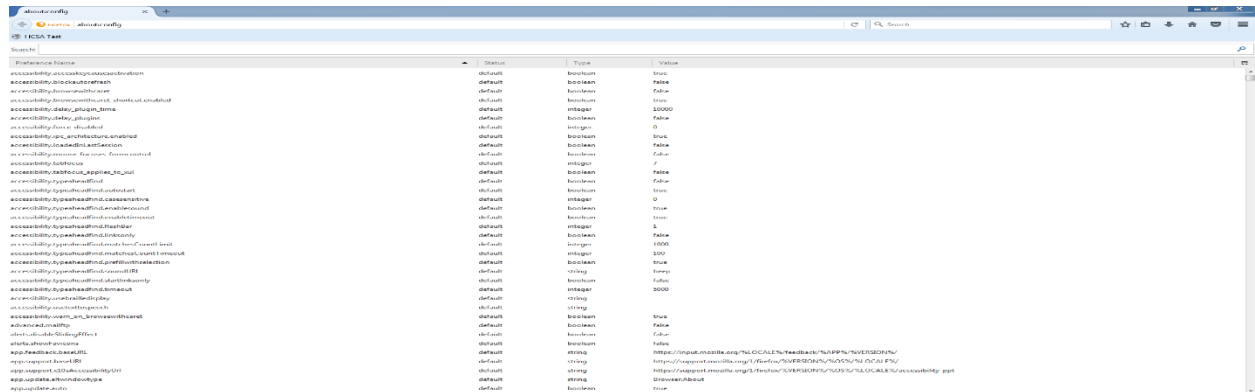
1. Install the plug in first.
2. Open a blank page of Firefox and input about:config



Press Enter. You will see



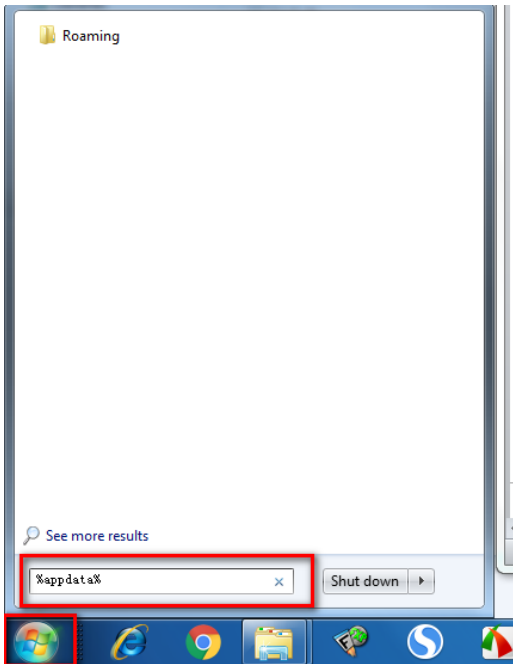
Click on the, "I Accept the Risk" Button.



You will then be in the plugin section of Firefox.

Right click, then go to NEW from the dropdown list. You will have 3 options to choice from, you will need to select Boolean. Once you have done that, you will need to type the plugin name:

plugin.load_flash_only





Find prefs.js, right click and choose "Edit", input below message between any two user_pref messages. Save it

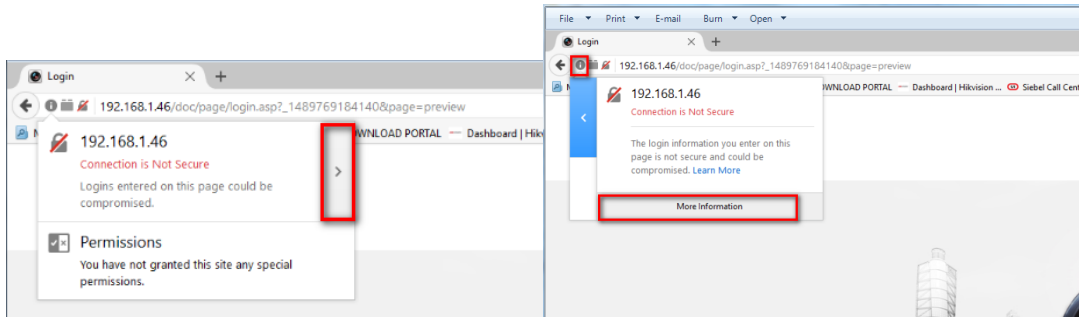
```
user_pref("plugin.load_flash_only", false);
```

```

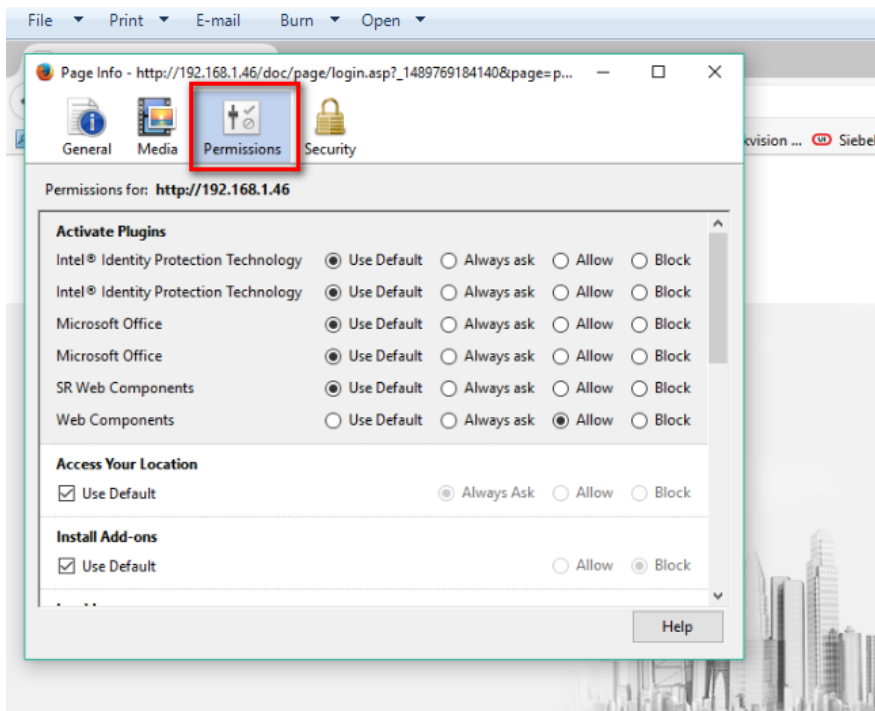
prefs.js - Notepad
File Edit Format View Help
user_pref("media.gmp-manager.buildID", "20170302120751");
user_pref("media.gmp-manager.lastCheck", 1489764362);
user_pref("media.gmp-widevinecdm.abi", "x86-msvc-x64");
user_pref("media.gmp-widevinecdm.lastUpdate", 1489764365);
user_pref("media.gmp-widevinecdm.version", "1.4.8.903");
user_pref("media.gmp.storage.version.observed", 1);
user_pref("media.hardware-video-decoding.failed", false);
user_pref("network.cookie.prefsMigrated", true);
user_pref("network.predictor.cleaned-up", true);
user_pref("pdfjs.migrationVersion", 2);
user_pref("pdfjs.previousHandler.alwaysAskBeforeHandling", true);
user_pref("pdfjs.previousHandler.preferredAction", 4);
user_pref("places.history.expiration.transient_current_max_pages", 122334);
user_pref("plugin.disable_full_page_plugin_for_types", "application/pdf");
user_pref("plugin.load_flash_only", false);
user_pref("pref.browser.language.disable_button.up", false);
user_pref("sanity-test.device-id", "0x0416");
user_pref("sanity-test.driver-version", "10.18.10.3907");
user_pref("sanity-test.running", false);
user_pref("sanity-test.version", "20170302120751");

```

- Input device IP and get the login interface, click the  button and click , then click More information.



Click Permissions, for Web Components, choose “Allow”



5. Close Firefox, run it again and input the IP address of device. It will ask if you want to allow the plug-in, choose “Allow”.
6. Input the user name and password to login the device and you will be able to live view.